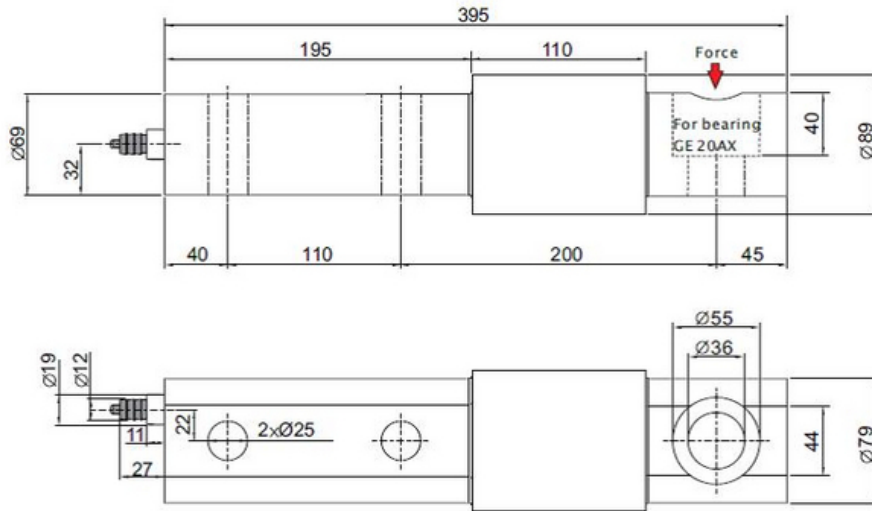


## Beam Load Cell BM 80 (BM-Ex 80)

Robust digital heavy duty ATEX certified beam load cell produced in stainless steel and hermetically sealed to IP68 for process weighing, industrial weighing and tough applications such as on-board truck weighing, offshore, steel industry etc. The BM-Ex 80 load cell can be used in ATEX (Ex) IECEx and non-ATEX applications

<b>Type:</b>	BM 80 (Non-ATEX) BM-Ex 80 (ATEX)
<b>Capacity (Emax):</b>	5000, 6000, 7000kg
<b>Accuracy:</b>	Industrial 0.10%, Precision 0.05%, High Precision 0.025%
<b>Overload Tolerance:</b>	Up to 500% of rated capacity

- Made in Denmark
  - ATEX and IECEx certified (Zone 1, 2, 21, 22)
  - Stainless steel 1.4542 (17-4 PH)
  - Robust capacitive technology
  - High tolerance of up to 1.000% overload
  - Hermetically sealed to IP68
  - Laser welded with Duplex 1.4462 stainless steel
  - High accuracy, High resolution
  - Can be supplied with Mud resistant and Halogen free cables for offshore installation
- 
- Digital filters
  - Cable length up to 100meters
  - Capacity (Emax): 5000, 6000, 7000kg
  - Accuracy: Industrial 0.10%, Precision 0.05%, High Precision 0.025%
  - Calibration independent of cable length
  - Load cell cable replaceable
  - Easy mechanical and electrical installation
  - Withstands welding voltages and ESD
  - Can be used in both ATEX / IECEx and non-ATEX installations
- 
- [Digital Beam Load Cell Type BM-Ex 80 Dimensions PDF](#)
  - [Mounting Kit for BM80 load cell PDF](#)
  - [Mounting Kit for BM80 load cell 3D PDF \(right click -> "Save Link As..."\)](#)
  - [ATEX Certificate SEV14 ATEX 0171 X \(GERMAN\) PDF](#)
  - [ATEX Certificate SEV14 ATEX 0171 X \(ENGLISH\) PDF](#)
  - [BM 80 BM-Ex 80 Beam Load Cell STEP 3D CAD File \(right click -> "Save Link As..."\)](#)
  - [Guideline Correct Mounting of BNC Connector \(UK\) PDF](#)
  - [VIDEO - Correct Mounting of BNC Connector](#)



Parameter	Unit	0.10%	0.05%	0.025%
Rated capacity ( $E_{max}$ )	kg		5000, 6000, 7000	
Safe overload limit	% of $E_{max}$		300 to 500	
Safe sideload limit	% of $E_{max}$		500 to 1000	
Minimum dead load	% of $E_{max}$		0	
Combined accuracy	% of $E_{max}$	0.100	0.050	0.025
Repeatability	% of $E_{max}$	0.030	0.025	0.015
Hysteresis	% of $E_{max}$	0.050	0.030	0.018
Creep 30 min.	% of $E_{max}$	0.040	0.030	0.020
Temperature effect on zero	% /10°C	0.060	0.055	0.040
Temperature effect on sensitivity	% /10°C	0.060	0.055	0.040
Compensated temperature range	°C		-10 to 50	
Operating temperature range	°C		-50 to 70 (100*)	
Deflection at $E_{max}$	mm		0.10	
Measuring rate	Hz		500	
Supply	Vdc		24Vdc $\pm$ 5%	
Internal resolution	Bit		24	
Material			Stainless Steel 17-4 PH and AISI 316	
Protection			IP68	
Cable			6meter standard coaxial RG-58 ( $\varnothing$ 6mm) with BNC connector	
Maximum cable length	m		100	
Weight	kg		9.5	
Output options			EtherNet/IP, PROFINET, EtherCAT, Profibus DP, Modbus TCP/IP, DeviceNet, RS485, 4-20mA, 0-10Vdc	

\* with Teflon cable

- Dynamic weighing
- Process weighing
- Mobile weighing
- Vibration feeder
- Big-bag equipment
- Hopper scales
- Conveyor scales
- Heavy duty platform scales
- Heavy duty applications
- Offshore applications

- ATEX and IECEx (Zone 1, 2, 21, 22) version type BM-Ex
- ATEX II 2G Ex ia IIC T6 Gb / ATEX II 2D Ex IIIC T85°C Db
- Mounting kits available
- Customized versions available
- Load cell cable length 10, 20, 50 or 100meters
- Mud resistant and Halogen free cables for offshore installation
- Special PE load cell cable available for freezing low temperature (can be used down to -50 degrees Celsius)
- Special Teflon load cell cable available for very high temperature (can be used up to 100 degrees Celsius)

