



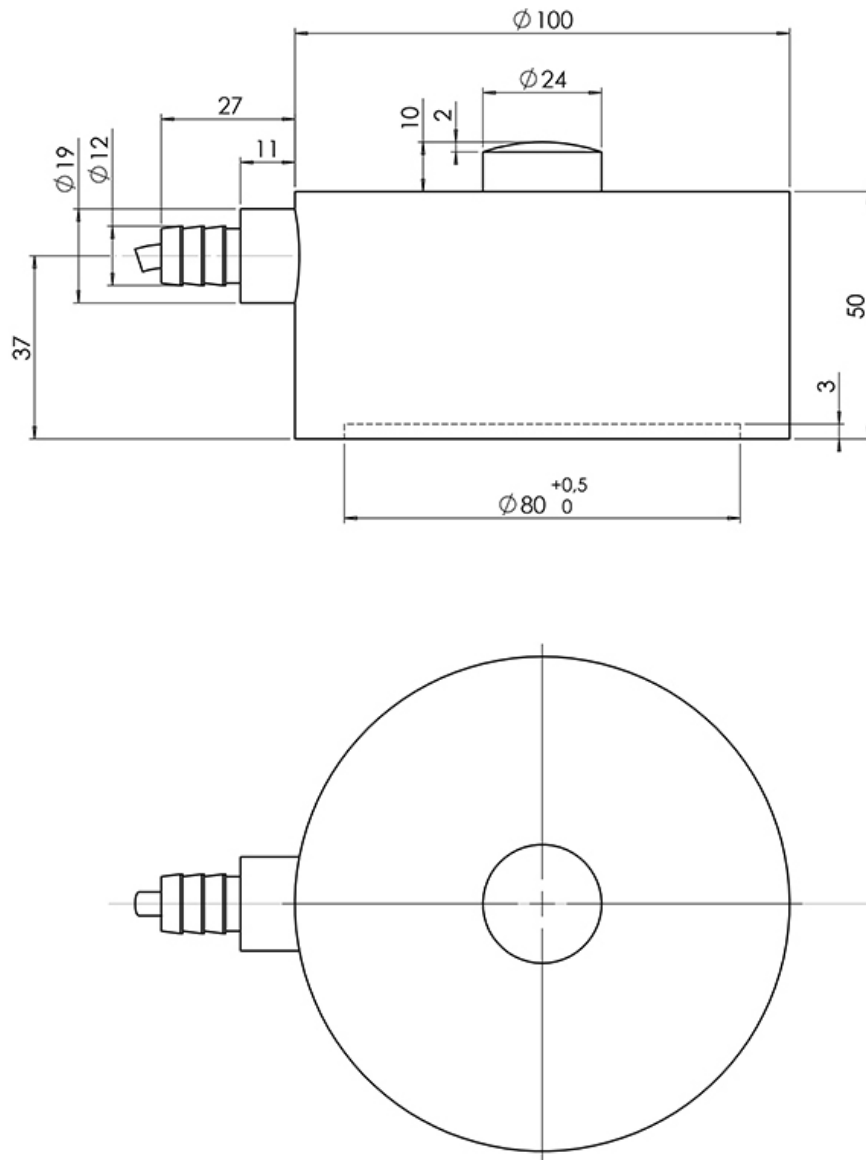
## Compression Load Cell MD

Robust digital compression load cell produced in stainless steel and hermetically sealed to IP68 for hygienic weighing installations, installations in tough environments and general process weighing

<b>Type:</b>	MD
<b>Capacity (Emax):</b>	50, 100, 150, 250, 500, 1000, 1500, 2000, 3000, 4000, 5000kg
<b>Accuracy:</b>	Industrial 0.10%, Precision 0.05%, High Precision 0.025%
<b>Overload Tolerance:</b>	500% at 50kg, 200% at 5000kg capacity

- Made in Denmark
  - Robust capacitive technology
  - Electropolished stainless steel 1.4542 (17-4 PH)
  - High tolerance of up to 500% overload
  - High accuracy
  - Hermetically sealed to IP68
  - Laser welded with Duplex 1.4462 stainless steel
  - Hygienic design and installation
- 
- Withstands welding voltages and ESD
  - Capacity (Emax): 50, 100, 150, 250, 500, 1000, 1500, 2000, 3000, 4000, 5000kg
  - Accuracy: Industrial 0.10%, Precision 0.05%, High Precision 0.025%
  - Cable length up to 100meters
  - Load cell cable replaceable
  - Calibration independent of cable length
  - Easy mechanical and electrical installation

- [Digital Compression Load Cell Type MD Dimensions PDF](#)
- [MD Compression Load Cell STEP 3D CAD File \(right click -> "Save Link As..."\)](#)
- [MD DL DLA with Base Plate JPG](#)
- [MD DL DLA Base Plate JPG](#)
- [MD DL DLA Base Plate PDF](#)
- [MD DL DLA Base Plate STEP \(right click -> "Save Link As..."\)](#)
- [Guideline Correct Mounting of BNC Connector \(UK\) PDF](#)
- [VIDEO - Correct Mounting of BNC Connector](#)



Parameter	Unit	0.10%	0.05%	0.025%
Rated capacity ( $E_{max}$ )	kg	50, 100, 150, 250, 500, 1000, 1500, 2000, 3000, 4000, 5000		
Safe overload limit	% of $E_{max}$	200 to 500		
Safe sideload limit	% of $E_{max}$	300 to 1000		
Minimum dead load	% of $E_{max}$	0		
Combined accuracy	% of $E_{max}$	0.100	0.050	0.025
Repeatability	% of $E_{max}$	0.030	0.025	0.020
Hysteresis	% of $E_{max}$	0.055	0.040	0.020
Creep 30 min.	% of $E_{max}$	0.060	0.040	0.040
Temperature effect on zero	% / 10°C	0.060	0.055	0.055
Temperature effect on sensitivity	% / 10°C	0.060	0.055	0.055
Compensated temperature range	°C	-10 to 50		
Operating temperature range	°C	-50 to 70 (100*)		
Deflection at $E_{max}$	mm	0.10		
Measuring rate	Hz	200		
Supply	Vdc	24Vdc ±5%		
Internal resolution	Bit	24		
Material		Stainless Steel 17-4 PH and AISI 316		
Protection		IP68		
Cable		6meter standard coaxial RG-58 (Ø6mm) with BNC connector		
Maximum cable length	m	100		
Weight	kg	2.0		
Output options		EtherNet/IP, PROFINET, Profibus DP, Modbus TCP/IP, DeviceNet, RS485, 4-20mA, 0-10Vdc		

\* with Teflon cable

- Tank weighing
  - Process weighing
  - Big-bag equipment
  - Filling and dosing
  - Offshore
  - Level measurement
  - Platform scales
  - Hopper scales
  - Heavy duty applications
  - Belt scales
- 
- Load cell cable length 10, 20, 50 or 100meters
  - Special PE load cell cable available for freezing low temperature (can be used down to -50 degrees Celsius)
  - Special Teflon load cell cable available for very high temperature (can be used up to 100 degrees Celsius)
  - Base plate available
  - Alfa Laval tank leg available for Eilersen load cells