

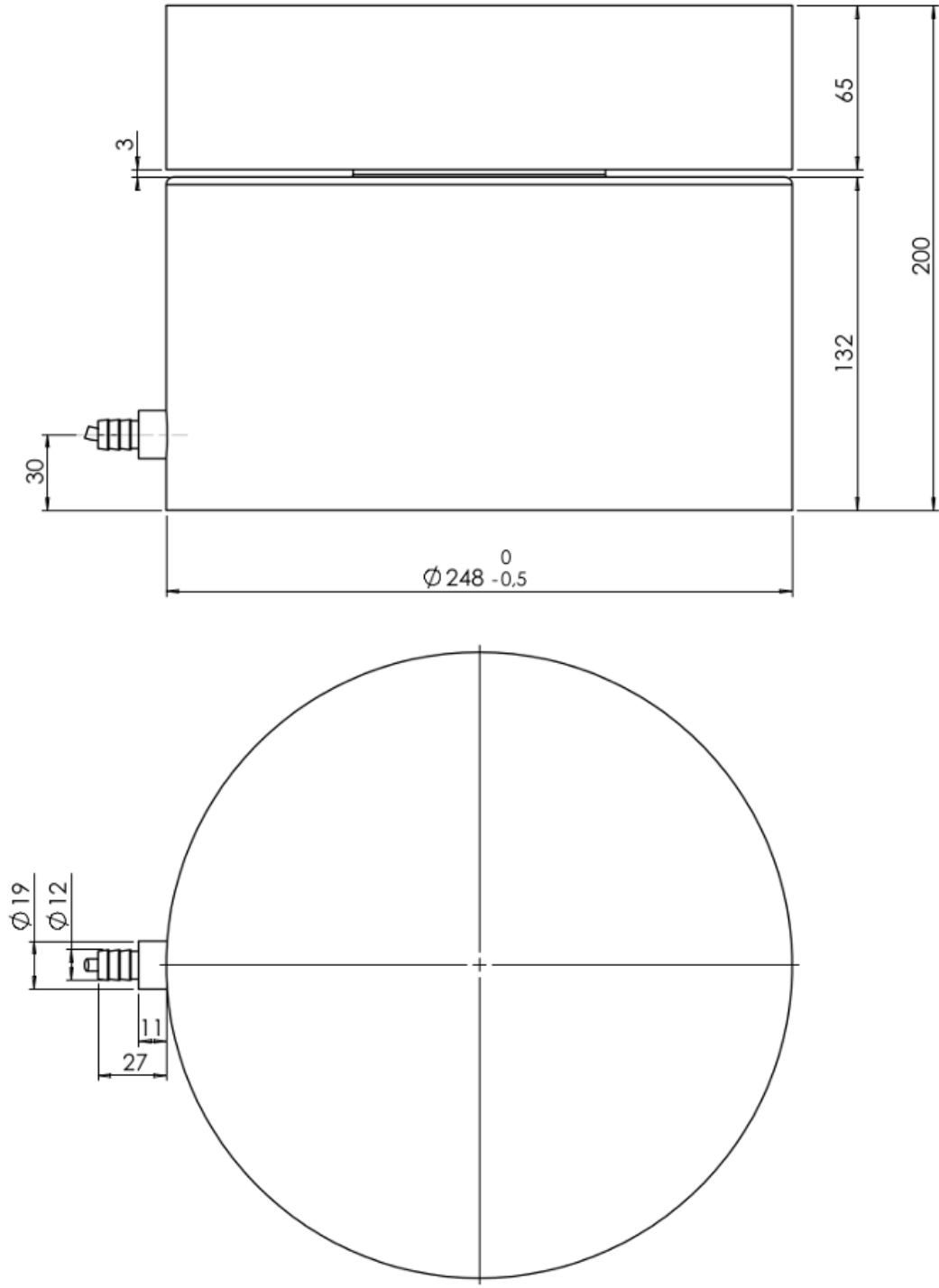


## Beam Loam Cell SDC

Compact digital beam load cell for dynamic weighing, web tension measurement, process weighing, force measurement and general industrial weighing. This load cell is a short version of the SD beam load cell and produced in stainless steel and laser welded (IP68)

<b>Type:</b>	SDC
<b>Capacity (Emax):</b>	1, 2, 5, 10, 20, 30, 50, 100kg
<b>Accuracy:</b>	Industrial 0.10%, Precision 0.05%, High Precision 0.025%
<b>Overload Tolerance:</b>	500% at 2kg, 200% at 100kg capacity

- Short version of SD load cell
  - Made in Denmark
  - Electropolished stainless steel 1.4542 (17-4 PH)
  - Robust capacitive technology
  - Patented high reliability capacitive sensor
  - High tolerance of up to 1.000% overload
  - Hermetically sealed to IP68
  - Laser welded with Stainless Steel 1.4541
  - High accuracy, High resolution
  - Small deflection at rated capacity
- 
- Capacity (Emax): 1, 2, 5, 10, 20, 30, 50, 100kg
  - Accuracy: Industrial 0.10%, Precision 0.05%, High Precision 0.025%
  - High resonance frequency (spring rate) for rapid dynamic weighing
  - Digital filters
  - Cable length up to 100meters
  - Calibration independent of cable length
  - Load cell cable replaceable
  - Easy mechanical and electrical installation
  - Withstands welding voltages and ESD
- 
- [Digital Beam Load Cell Type SDC Dimensions PDF](#)
  - [Digital Beam Load Cell Type SDC STEP \(right click -> "Save Link As..."\)](#)
  - [Guideline Correct Mounting of BNC Connector \(UK\) PDF](#)
  - [VIDEO - Correct Mounting of BNC Connector](#)



Parameter	Unit	0.10%	0.05%	0.025%*
Rated capacity ( $E_{max}$ )	kg		1, 2, 5, 10, 20, 50	
Safe overload limit	% of $E_{max}$		200 to 1000	
Safe sideload limit	% of $E_{max}$		300 to 1000	
Combined accuracy	% of $E_{max}$	0.100	0.050	0.025
Repeatability	% of $E_{max}$	0.018	0.015	0.010
Hysteresis	% of $E_{max}$	0.033	0.020	0.017
Creep 30 min.	% of $E_{max}$	0.035	0.025	0.017
Temperature effect on zero	% /10°C	0.050	0.035	0.035
Temperature effect on sensitivity	% /10°C	0.050	0.035	0.035
Compensated temperature range	°C		-10 to 50	
Operating temperature range	°C		-50 to 70 (100**)	
Deflection at $E_{max}$	mm		max 0.10	
Measuring rate	Hz		200	
Supply	Vdc		24Vdc $\pm$ 5%	
Internal resolution	Bit		24	
Material			Stainless Steel 17-4PH and AISI316	
Protection			IP68	
Cable			6meter standard coaxial RG-58 ( $\varnothing$ 6mm) with BNC connector	
Maximum cable length	m		100	
Weight	kg		1.1	

## Output options

EtherNet/IP, PROFINET, Profibus DP, Modbus TCP/IP,  
Modbus ASCII/RTU, DeviceNet, RS485, 4-20mA, 0-10Vdc

\* higher accuracies available on request

\*\* with Teflon cable

- Web tension measurement
- Force measurement
- Dynamic weighing
- Process weighing
- Small tanks and vessels
- Vibration sorters
- Filling and dosing

- Load cell cable length 10, 20, 50 or 100meters
- Special PE load cell cable available for freezing low temperature (can be used down to -50 degrees Celsius)
- Special Teflon load cell cable available for very high temperature (can be used up to 100 degrees Celsius)