



Single Point Load Cell SPSXL

The robust digital single point load cell type SPSXL in stainless steel is hermetically sealed to IP69K. The main applications are graders, checkweighers, filling and dosing equipment, belt scales, platform scales, bench scales etc. ATEX (Ex) and IECEx approved versions are available

Type:	SPSXL
Capacity (Emax):	20, 50, 100, 150, 200, 250kg
Accuracy:	Industrial 0.025% Precision 0.015%
Overload Tolerance:	Up to 1000% of rated capacity

- Made in Denmark
- Stainless steel 1.4542 (17-4 PH)
- Robust capacitive technology
- ATEX and IECEx certified (Zone 1, 2, 21, 22)
- High tolerance of up to 1.000% overload
- High accuracy, High resolution
- Platform size up to 1200 x 600mm
- Can be supplied with Mud resistant and Halogen free cables for offshore installation
- Hermetically sealed to IP68

- Laser welded with Stainless Steel 1.4541
- Capacity (Emax): 20, 50, 100, 150, 200, 250kg
- Accuracy: Industrial 0.025% Precision 0.015%
- Small deflection at rated capacity
- High resonance frequency (spring rate) for rapid dynamic weighing
- Easy mechanical and electrical installation
- Digital filters
- Load cell cable replaceable
- Can be used in both ATEX / IECEx and non-ATEX installations

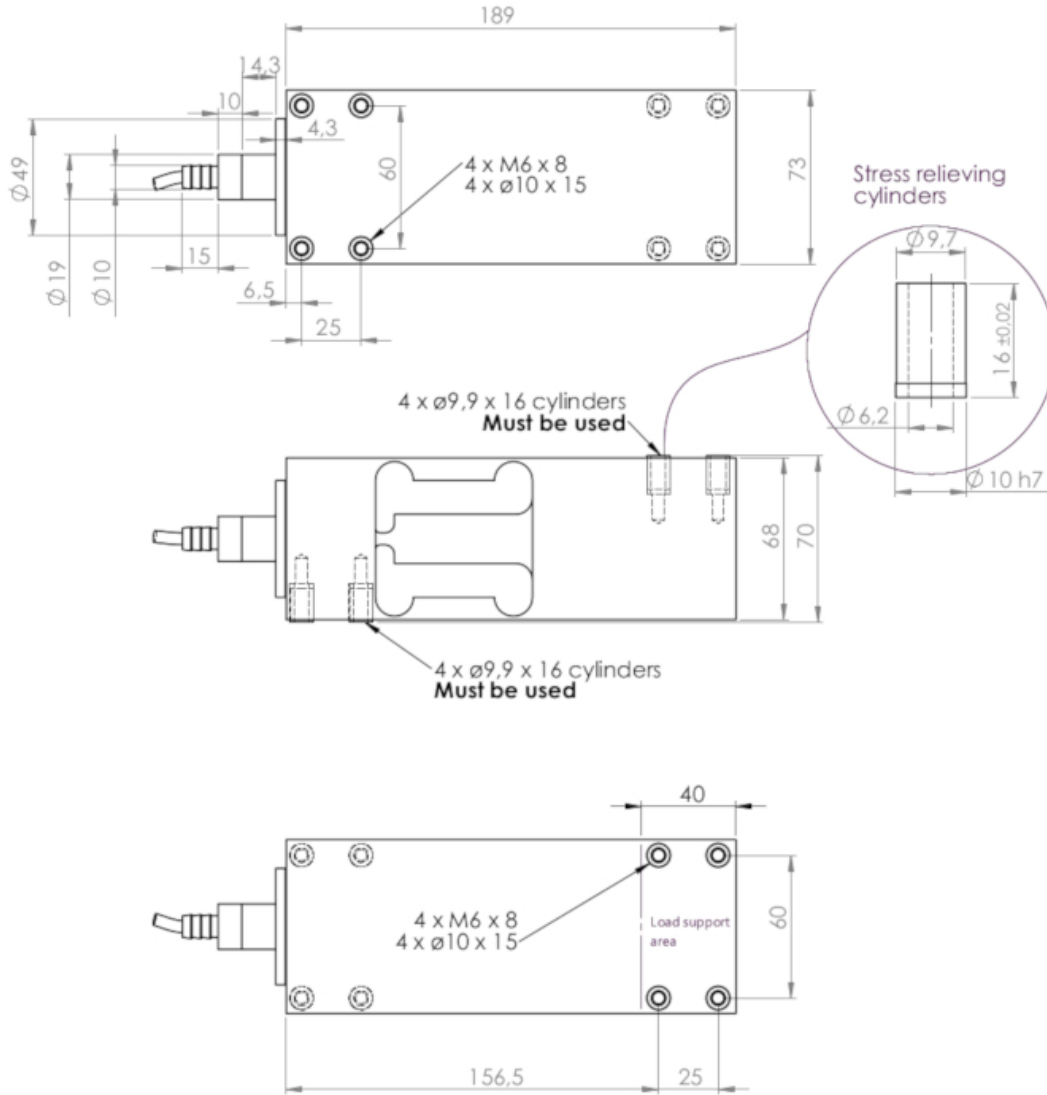
- [ATEX Certificate SEV14 ATEX 0171 X \(GERMAN\) PDF](#)
- [ATEX Certificate SEV14 ATEX 0171 X \(ENGLISH\) PDF](#)
- [Guideline Correct Mounting of BNC Connector \(UK\) PDF](#)
- [VIDEO - Correct Mounting of BNC Connector \(UK\) PDF](#)

SPSXL 0-100kg with M6 thread

- [Digital Single Point Load Cell Type SPSXL Dimensions PDF](#)
- [SPSXL Single Point Load Cell STEP 3D CAD File \(right click -> "Save Link As..."\)](#)

SPSXL 150-250kg with M8 thread

- [3D File Digital Single Point Load Cell Type SPSXL WITH M8 THREAD Dimensions PDF](#)
- [Digital Single Point Load Cell Type SPSXL WITH M8 THREAD Dimensions PDF](#)
- [SPSXL Single Point Load Cell WITH M8 THREAD STEP 3D CAD File \(right click -> "Save Link As..."\)](#)



Parameter	Unit	0.025%	0.015%
Rated capacity (E_{max})	kg	20, 50, 100, 150**, 200**, 250**	
Safe overload limit	% of E_{max}	300 to 1000	
Safe sideload limit	% of E_{max}	500 to 2000	
Combined accuracy	% of E_{max}	0.025	0.015
Repeatability	% of E_{max}	0.012	0.010
Hysteresis	% of E_{max}	0.010	0.005
Creep 30 min.	% of E_{max}	0.015	0.010
Temperature effect on zero	% /10°C	0.030	0.025
Temperature effect on sensitivity	% /10°C	0.030	0.025
Compensated temperature range	°C	-10 to 50	
Operating temperature range	°C	-50 to 70 (100*)	
Deflection at E_{max}	mm	max 0.10	
Measuring rate	Hz	500	
Supply	Vdc	24Vdc ±5%	
Internal resolution	Bit	24	
Material		Stainless Steel 17-4PH and AISI316	
Protection		IP68	
Cable		6meter standard coaxial RG-58 (Ø6mm) with BNC connector	
Maximum cable length	m	100	
Weight	kg	5.5	

Output options

PROFINET, Profibus DP, EtherNet/IP, Modbus TCP/IP,
EtherCAT, RS485, 4-20mA, 0-10Vdc

* with Teflon cable

** with M8 thread

- Dynamic weighing
- Multihead weighers
- Factory Automation
- Packaging machines
- Filling and dosing
- Flow measurement
- Bench and platform scales
- Conveyor scales
- Process weighing
- Checkweighers

- ATEX and IECEx certified (Zone 1, 2, 21, 22)
- Customized versions available
- Load cell cable length 10, 20, 50 or 100meters
- Mud resistant and Halogen free cables for offshore installation
- Special PE load cell cable available for freezing low temperature (can be used down to -50 degrees Celsius)
- Special Teflon load cell cable available for very high temperature (can be used up to 100 degrees Celsius)