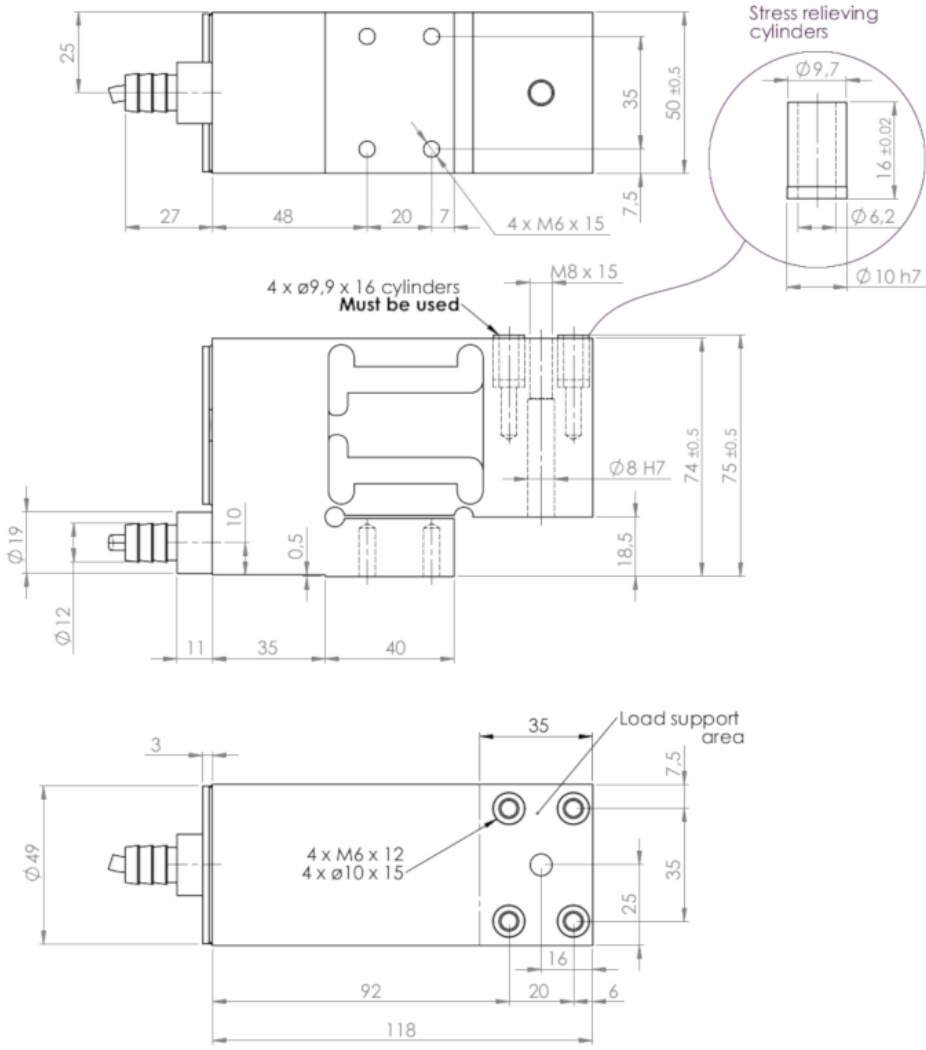


Single Point Load Cell SPSX

The robust digital single point load cell type SPSX in stainless steel is hermetically sealed to IP69K. The main applications are graders, multihead weighers, checkweighers, filling machines, belt scales, platform scales, bench scales etc. ATEX (Ex) and IECEx approved versions are available

Type:	SPSX
Capacity (Emax):	5, 10, 20, 30, 50, 100, 150, 200kg
Accuracy:	Industrial 0.025% Precision 0.015% High Precision 0.010%
Overload Tolerance:	Up to 1000% of rated capacity

- Made in Denmark
 - Electropolished stainless steel 1.4542 (17-4 PH)
 - Laser welded with Duplex 1.4462 stainless steel
 - ATEX and IECEx certified (Zone 1, 2, 21, 22)
 - Robust capacitive technology
 - High tolerance of up to 1000% overload
 - High accuracy, High resolution
 - Platform size up to 400 x 400mm
 - Hermetically sealed to IP68
 - Load cell cable replaceable
-
- Capacity (Emax): 5, 10, 20, 30, 50, 100, 150, 200kg
 - Accuracy: Industrial 0.025% Precision 0.015% High Precision 0.010%
 - Small deflection at rated capacity
 - High resonance frequency (spring rate) for rapid dynamic weighing
 - Easy mechanical and electrical installation
 - Digital filters
 - Can be used in both ATEX / IECEx and non-ATEX installations
-
- [Single Point Load Cell Type SPSX Dimensions PDF](#)
 - [Single Point Load Cell Type SPSX 3D Dimensions PDF](#)
 - [SPSX Single Point Load Cell STEP 3D CAD File \(right click -> "Save Link As..."\)](#)
 - [ATEX Certificate SEV14 ATEX 0171 X \(GERMAN\) PDF](#)
 - [ATEX Certificate SEV14 ATEX 0171 X \(ENGLISH\) PDF](#)
 - [Guideline Correct Mounting of BNC Connector \(UK\) PDF](#)
 - [VIDEO - Correct Mounting of BNC Connector \(UK\) PDF](#)



Parameter	Unit	0.025% C3	0.015%** C4
Rated capacity (E_{max})	kg	5, 10, 20, 30, 50, 100, 150, 200	
Safe overload limit	% of E_{max}	300 to 1000	
Safe sideload limit	% of E_{max}	500 to 2000	
Minimum dead load	% of E_{max}	0	
Combined accuracy	% of E_{max}	0.025	0.015
Repeatability	% of E_{max}	0.012	0.010
Hysteresis	% of E_{max}	0.010	0.005
Creep 30 min.	% of E_{max}	0.015	0.010
Temperature effect on zero	% /10°C	0.030	0.025
Temperature effect on sensitivity	% /10°C	0.030	0.025
Compensated temperature range	°C	-10 to 50	
Operating temperature range	°C	-50 to 70 (100*)	
Deflection at E_{max}	mm	0.10	
Measuring rate	Hz	500	
Supply	Vdc	24Vdc ±5%	
Internal resolution	Bit	24	
Material		Stainless Steel 17-4PH and AISI316	
Protection		IP68	
Cable		6meter standard coaxial RG-58 (Ø6mm) with BNC connector	
Maximum cable length	m	100	
Weight	kg	2.5	
Output options		PROFINET, Profibus DP, EtherNet/IP, Modbus TCP/IP, EtherCAT, RS485, 4-20mA, 0-10Vdc	

* with Teflon cable

** available in higher accuracy on request

- Dynamic weighing
- Multihead weighers
- Factory Automation
- Packaging machines
- Filling and dosing
- Flow measurement
- Bench and platform scales
- Conveyor scales
- Process weighing
- Checkweighers

- ATEX and IECEx (Zone 1, 2, 21, 22) version type SP5075A
- ATEX II 2G Ex ia IIC T6 / ATEX II 2D Ex iaD 21 T85°C
- Customized versions available
- Load cell cable length 10, 20, 50 or 100meters
- Mud resistant and Halogen free cables for offshore installation
- Special PE load cell cable available for freezing low temperature (can be used down to -50 degrees Celsius)
- Special Teflon load cell cable available for very high temperature (can be used up to 100 degrees Celsius)