



Digital LCD Weighing Indicator 5024G

Fully digital OIML certified weighing indicator type 5024G with alibi memory and software for standard weighing applications. Digital signal processor for displaying and processing the data from the Eilersen range of digital load cells. Durable capacitive touch keyboard

Type:	5024G
Options:	Panel mounting Mounted in stainless steel housing OEM version Customized application software

- Made in Denmark
- 5,2" LCD for displaying data and parameters
- Touch keyboard with 7 keys for zeroing, tare function, entering parameters, set-points, etc.
- Alibi memory
- Ethernet, RS485, and 4-20mA ACTIVE output for communication with PCs, PLCs, central data processing systems, printers, bar code readers, etc.
- 4 configurable 24Vdc I/O
- Function keys for Start/Stop and Print for handling various processes
- Durable front with no keyboard to be worn out
- Optional Profibus DP, DeviceNet, EtherNet IP or PROFINET interface

- [Eilersen weighing terminal type 5024G shown in EC4002 enclosure jpg](#)
- [Eilersen weighing terminal type 5024G i EC4002 kapsling DIMENSIONER PDF](#)
- [5024G EC Type-Approval Certificate OIML R76 PDF](#)
- [5024G manual for Basic system with automatic dosing version STDLIM.140630.6v0 PDF](#)
- [5024G manual for Intelligent Setup for STDLIM.140630.6v0 PDF](#)
- [5024G Dimensions PDF](#)
- [5024G Panel Cut-out Dimensions PDF](#)
- [5024G Panel 3D Dimensions PDF](#)
- [5024G Weighing Indicator STEP 3D CAD file \(right click -> "Save Link As..."\)](#)
- [Example 1 - 5024G wiring with 2000 load cells and Profibus DP MCE2035 interface module PDF](#)
- [Example 2 - 5024G wiring with 4000 load cells and DeviceNet MCE9637 interface module PDF](#)
- [Example 3 - 5024G wiring with 2000 load cells and EtherNet IP 2050 interface module PDF](#)
- [Examples 5024G Digital LCD Weighing Indicator](#)

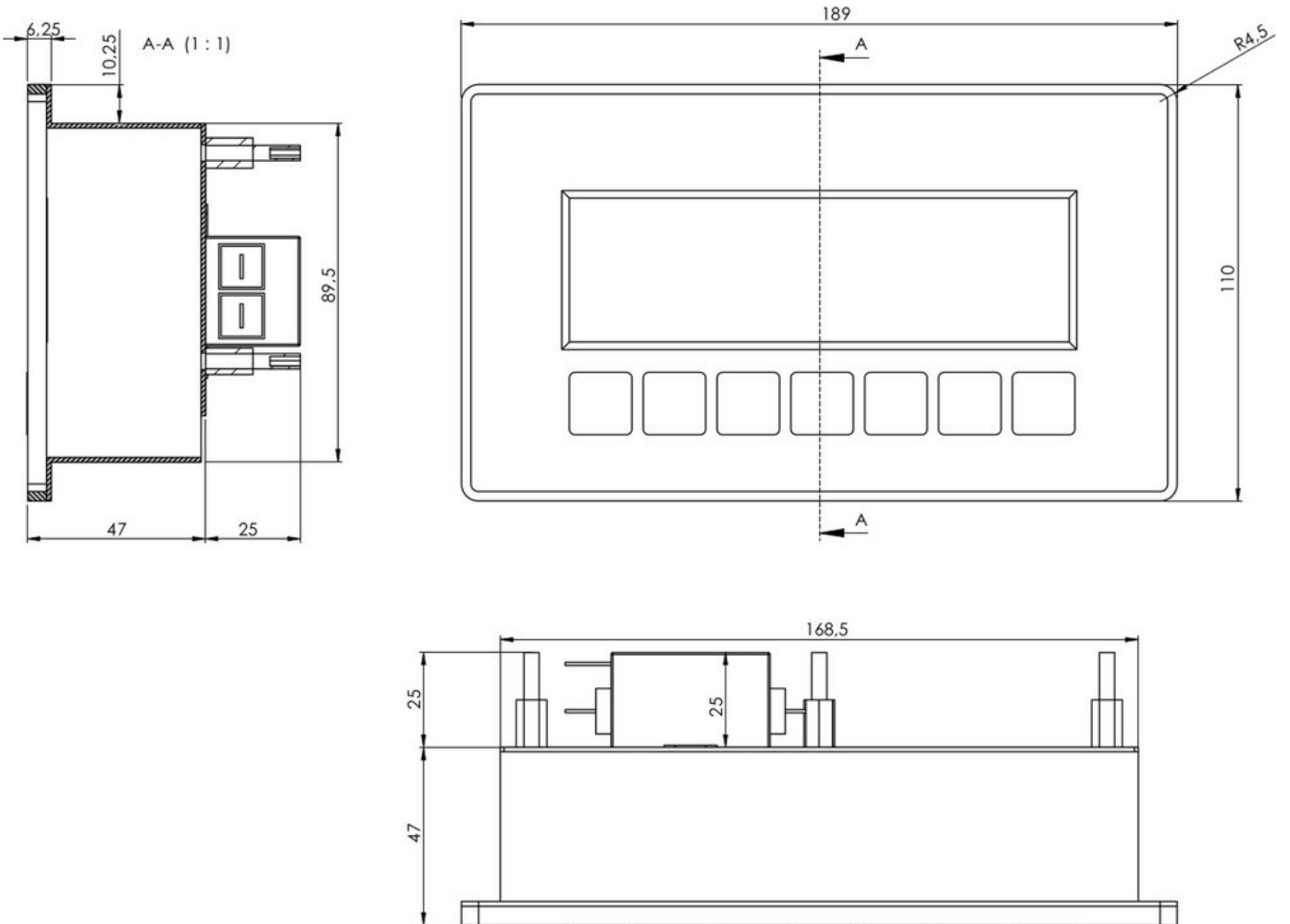
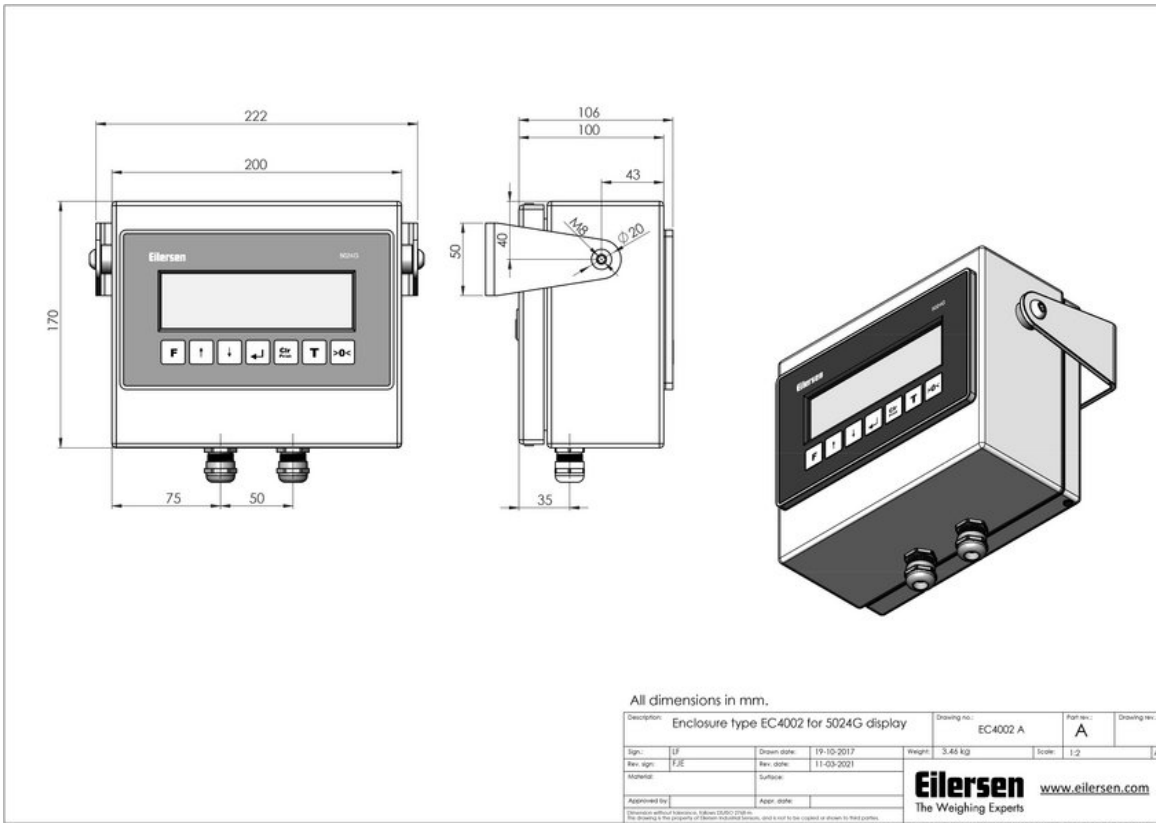
Eilersen offers many standard and customized software versions for the weighing indicators, which means it would potentially create confusion to present all the documentation on this website.

If you need documentation on a weighing indicator, please use the [contact form](#) and we will email the documentation as soon as possible.

Please include the following information in your request for documentation:

Hardware information i.e. the name/type of the weighing terminal and the serial no. (this information is located on a sticker on the side or back of the terminal). If possible, please also include the software version, which you can read from the screen of the indicator during the power on cycle.

Thank you!



Parameter	Specification
Mounting	Panel or in SS enclosure
Keyboard technology	Capacitive touch
Keyboard	Touch keyboard with 7 keys for zeroing, tare function, parameters, set-points etc.
Display	5,2" LCD display
Memory	4Mb
Digital I/O	4 pcs. configurable I/O (24Vdc \pm 10% 0.1A)
Standard digital interfaces	RS485, EtherNet/IP, Modbus TCP/IP
Optional digital interfaces	PROFINET, Profibus DP, DeviceNet
Accuracy digital interface	100% (digital measuring chain)
Analog output	ACTIVE 4-20mA (16bit D/A)
Power Supply	24Vdc \pm 5% min. 2A
Temperature range	-10 to 50 °C
Humidity	90% RH, non-condensing
IP Protection	Panel mounting IP64
Certified legal for trade	Optional

- Scales
- Filling & Dispensing of liquid or bulk material
- Dosing of liquid or bulk material
- Mobile weighing
- Checkweighing
- Customer specific application software
- Force measurement
- Vessel weighing
- Level-by-weight

- Panel mounting
- Mounted in stainless steel housing
- OEM version
- Customized application software