



Compression Load Cell DMC (DMC-Ex) 125

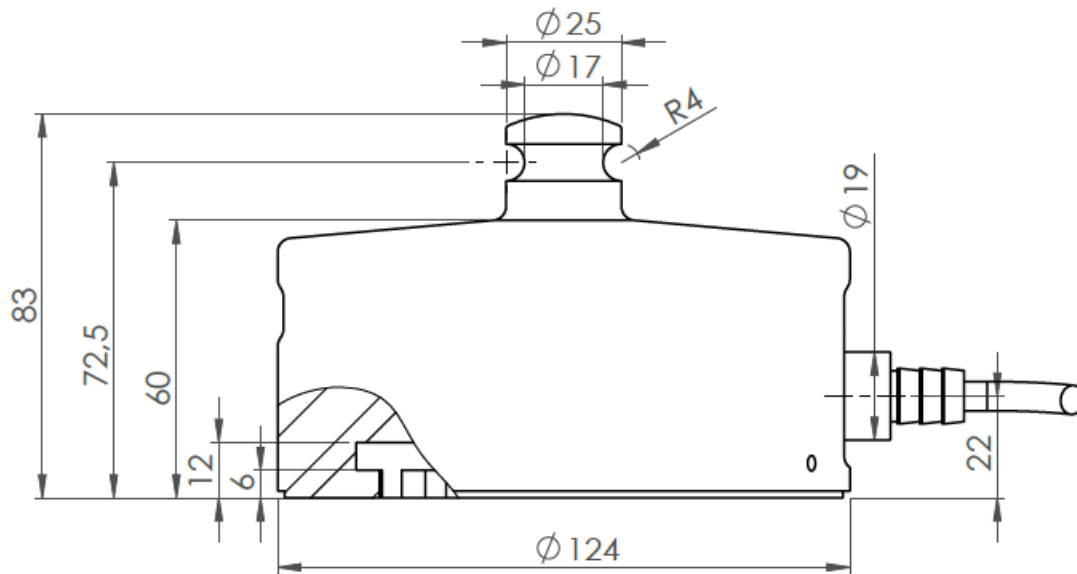
Capacitive load cells with integrated lift-off protection (patented) designed for large capacities such as process weighing in areas with seismic activity and outdoor silos. The robust digital load cells are made of stainless steel and hermetically sealed (IP68) for hygienic installations as well as installations in harsh environments and general process weighing. The load cells are also made in hygienic (aseptic) design according to EHEDG guidelines. Load cell type DMC-Ex can be used in ATEX (Ex) and IECEx applications (zones 1, 2, 21 and 22).

Type:	DMC 125 (Non-ATEX) DMC-Ex 125 (ATEX)
Capacity (Emax):	6000, 8000, 10000, 12000, 150000, 20000kg
Accuracy:	Industrial 0.10%, Precision 0.05%, High Precision 0.025%
Overload Tolerance:	Up to 300% of rated capacity

- Compression load cell with integrated lift-off protection (Patent Pending)
 - EHEDG compliant hygienic (aseptic) design without gaps or edges for easy cleaning to minimize the risk of bacteria growth
 - Developed and manufactured in Denmark
 - Low profile and hygienic design
 - High tolerance of up to 300% overload
 - Robust capacitive technology
 - Hermetically sealed to IP68
 - Electropolished stainless steel 1.4542 (17-4 PH)
 - Laser welded with Duplex 1.4462 stainless steel
 - ATEX and IECEx certified (Zone 1, 2, 21, 22)
 - Easy mechanical and electrical installation
-
- High accuracy, High resolution
 - Capacity (Emax): 6000, 8000, 10000, 12000, 15000, 20000
 - Accuracy: Industrial 0.10%, Precision 0.05%, High Precision 0.025%
 - Load cell cable length up to 100meters
 - Load cell calibration independent of cable length
 - Load cell cable replaceable on-site
 - Withstands welding voltages and ESD
 - Can be used in both ATEX / IECEx and non-ATEX installations
 - Can be supplied with Mud resistant and Halogen free cables for offshore installation

- [DMC \(DMC-Ex\) 125 Datasheet](#)
- [Digital Compression Load Cell Type DMC/DMC-Ex 125 LOAD CELL ONLY Dimension PDF](#)

- [Digital Compression Load Cell Type DMC/DMC-Ex 125 LOAD CELL ONLY Dimension STEP](#) (Right click > Save link as)
- [ATEX Certificate SEV23 ATEX 0689 X \(ENGLISH\) PDF](#)
- [IECEX SEV23.0028 X \(ENGLISH\) PDF](#)
- [Dimensions DMC/DMC-Ex 125 with Ø200 base plate PDF](#)
- [Dimensions DMC/DMC-Ex 125 with Ø200 base plate STEP](#) (Right click > Save link as)
- [DMC/DMC-Ex 125 top plate PDF](#)
- [DMC/DMC-Ex 125 top plate STEP](#) (Right click > Save link as)
- [Guideline Correct Mounting of BNC Connector \(UK\) PDF](#)
- [VIDEO - Correct Mounting of BNC Connector \(UK\)](#)



Parameter	Unit	0.10%	0.05%	0.025%*
Rated capacity (E_{max})	kg	6000, 8000, 10000, 12000, 15000, 20000		
Safe overload limit	% of E_{max}	up to 300		
Safe sideload limit	% of E_{max}	up to 300		
Combined Accuracy	% of E_{max}	0.100	0.050	0.025
Repeatability	% of E_{max}	0.030	0.025	0.020
Hysteresis	% of E_{max}	0.055	0.040	0.020
Creep 30 min.	% of E_{max}	0.060	0.050	0.050
Temperature effect on zero	% /10°C	0.060	0.055	0.055
Temperature effect on sensitivity	% /10°C	0.060	0.055	0.055
Compensated temperature range	°C	-10 to 50		
Operating temperature range	°C	-50 to 70		
Deflection at E_{max}	mm	max 0.10		
Measuring rate	Hz	500		
Supply	Vdc	24Vdc \pm 5%		
Internal resolution	Bit	24		
Material		Stainless Steel 17-4 PH and AISI 316		
Protection		IP68		
Cable		6 meter standard coaxial RG-58 (\varnothing 6mm) with BNC connector		
Maximum load cell cable length	m	100		
Weight	kg	8.5 **		
Output options		EtherNet/IP, PROFINET, EtherCAT, Modbus TCP/IP, Profibus DP, DeviceNet, RS485, 4-20mA, 0-10Vdc		

* 6, 8, 10 ton capacity

** including special base plate with lock

- Outdoor silos
- Tank weighing
- Process weighing
- High shear mixers
- Big-bag equipment
- Filling and dosing
- Offshore
- Installations in seismic area
- Level measurement
- Platform scales
- Hopper scales
- Heavy duty applications

- ATEX and IECEx (Zone 1, 2, 21, 22) version type DMC-Ex
- ATEX II 2G Ex ia IIC T6 Gb / ATEX II 2D Ex ia IIIC T85°C Db
- Standard base plate available
- Mounting top
- Customized top
- Tank leg (different dimensions)
- Load cell cable length 10, 20, 50 or 100meters
- Mud resistant and Halogen free cables for offshore installation
- Special PE load cell cable available for freezing low temperature (can be used down to -50 degrees Celsius)
- Special Teflon load cell cable available for very high temperature (can be used up to 100 degrees Celsius)