

4000 Generation Modules

ATEX Modbus TCP/IP Interface Module 4x50A



Special Features

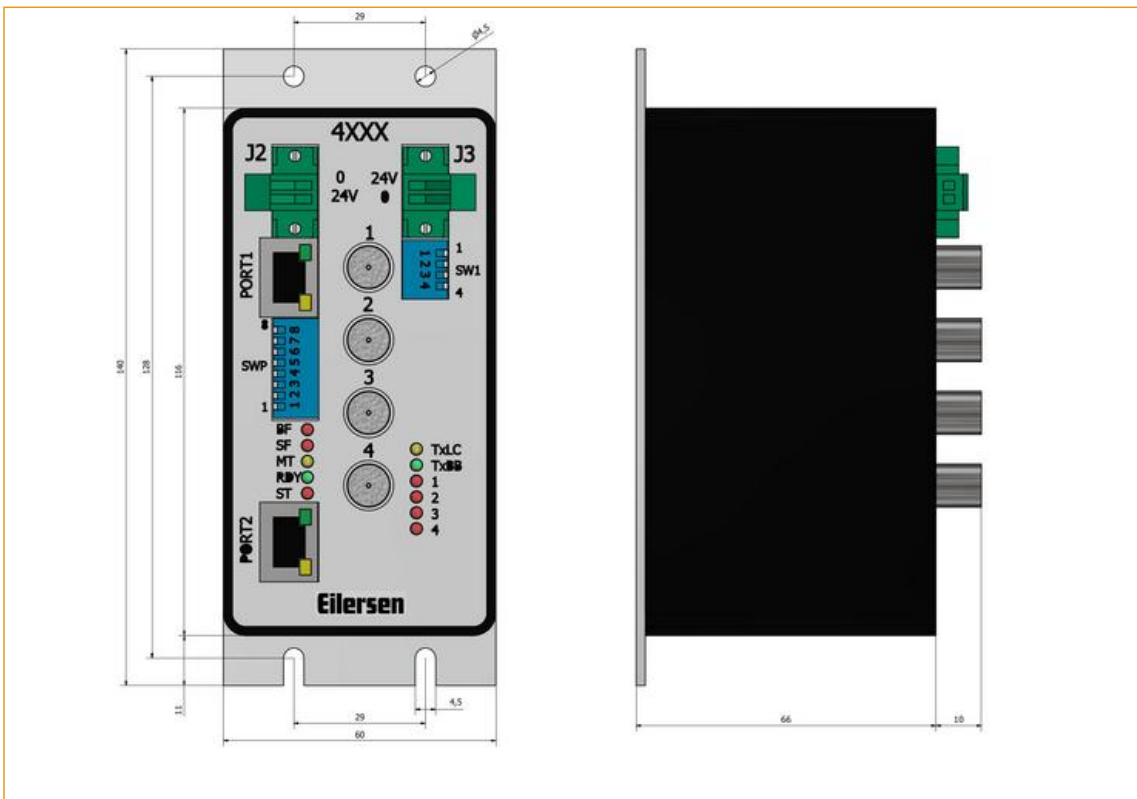
- Made in Denmark
- Modbus TCP/IP fieldbus interface
- Weighing module for up to 4 digital load cells
- For ATEX / IECEx and non-ATEX applications
- Plug-and-play installation with Eilersen digital load cells
- Advanced digital filters (configurable)
- A "Digital Junction Box" that can be mounted near the load cells or in a central panel
- Small Form Factor
- Setup via dip switches
- For ATEX / IECEx when supplied by power supply type 4051A
- The power supply 4051A and module type 4X50A must be installed outside the hazardous zone
- Application software can be made by request

Specifications

Parameter	Unit	Data
Application		4000 generation load cells and modules
EtherNet/IP Power Supply	Vdc	24Vdc +/- 10%, 1A
ATEX: Safe Power Supply		ATEX certified power supply type 4051A
Non-ATEX: Standard Power Supply	Vdc	24Vdc +/- 10%, 1A
Operating Temperature Range	°C	-20 to +50
Weight	g	500
Housing		Anodized Aluminum
Mounting		Mounting base or DIN rail



Dimensions (mm)



Options

- Prepared for panel mounting on DIN rail
- Mounted in stainless steel housing
- Customized application software
- OEM version

Documentation

- Weighing Module Type 4X50A Datasheet PDF
- 4000 Generation ATEX Certificate SEV07 ATEX 0150 (GERMAN)
- 4000 Generation ATEX Certificate SEV07 ATEX 0150 (ENGLISH)
- ATEX 4XXXA - 4051A - EXAMPLE illustration showing ATEX load cell connection
- Outer dimensions 4XXX weighing module in 3D STEP format (right click -> "Save Link As...")
- 4000 General Drawings NON-ATEX
- 4000 General Drawings ATEX

Manual and software for download of new software and changing the IP address for the 4X50A Ethernet/IP module

- EE Connect 160305 Version 1v0 ENG (zip file: right click -> "Save Link As...")

Modbus TCP/IP:

- Modbus TCP IP Manual MBconc4.160906.1v1 PDF (ENGLISH)

Disclaimer and Legal Information: The information on this web site is provided in connection with products supplied by Eilersen Electric A/S and affiliated companies ("Eilersen"). No license, expressed or implied, to any intellectual property rights is granted by this information or any documents on the web site. Eilersen assumes no liability and disclaims any expressed or implied warranty, relating to sale and/or use of Eilersen products including liability or warranties relating to fitness for a particular purpose. The information on this web site is provided as a service and for information purpose only and is subject to change without prior notice. Eilersen assumes no responsibility or liability whatsoever for any errors or inaccuracies that may appear on this web site. Eilersen is not responsible for any loss of hardware, software or files, caused by the use of the web site or elements downloaded or used from/on the web site. Hence Eilersen makes no warranty, that the web site or product or services provided on the web site (including free software downloads) will meet your requirements or will be uninterrupted, timely, secure or without errors, or that the web site or the servers used by Eilersen are free of viruses or bugs or are fully functional or accurate.