



Analog Output Module 4X79A

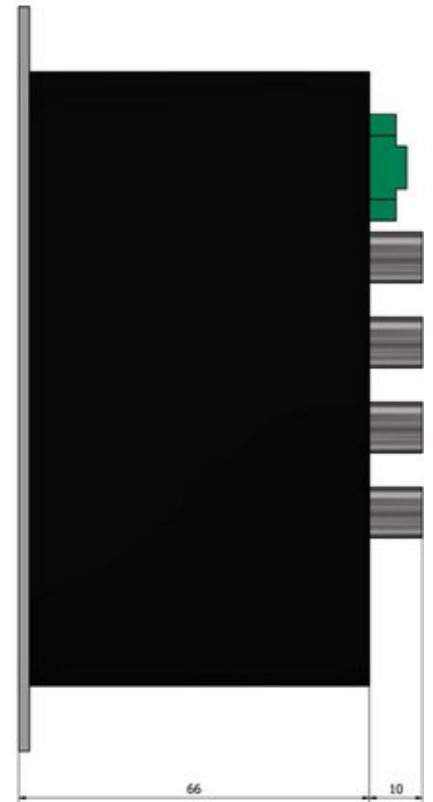
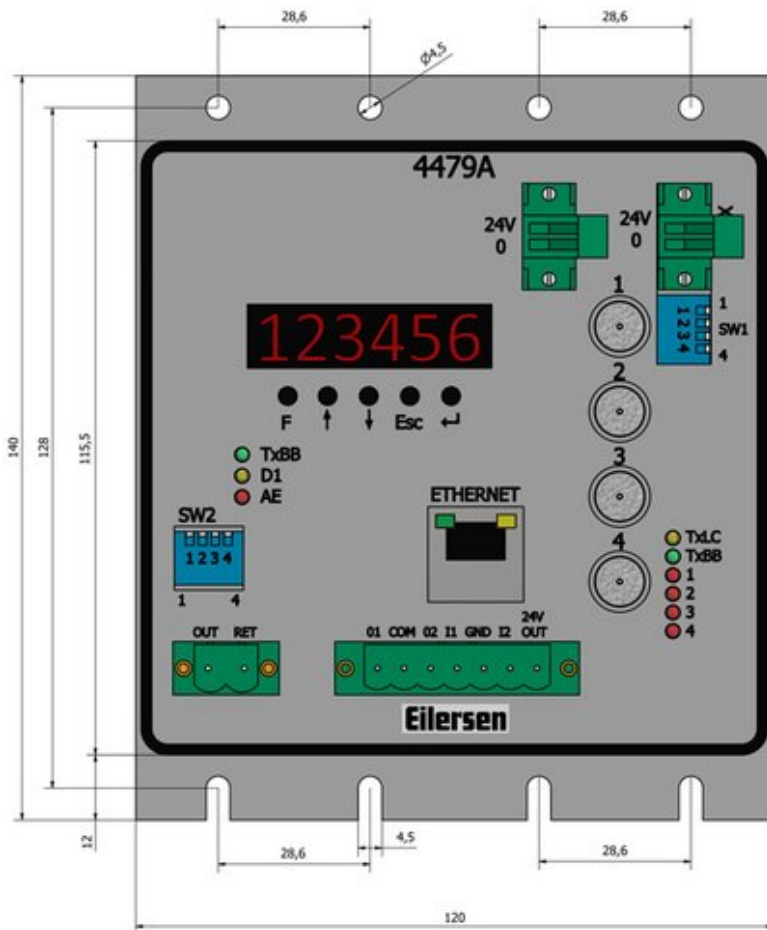
Analog output weighing module featuring a LED display, 4-20mA or 0-10Vdc active analog output and digital EtherNet interface. The module also features four I/O for level alarms and remote zeroing. This module can directly connect to up to four digital load cells, and can be used for ATEX / IECEx and non-ATEX installations.

Type: 4X79A

Interface: Analog output (4-20mA or 0-10Vdc active output) and Ethernet interface

- Made in Denmark
 - Analog 4-20mA or 0-10Vdc ACTIVE output
 - Digital EtherNet interface
 - Six character LED display
 - 2 digital inputs + 2 digital outputs
 - Weighing module for up to 4 digital load cells
 - Can show the weight on the connected load cells
 - Can show the summed weight for the connected load cells
 - Configurable measuring time (20ms -> 4sec)
 - 16bit D/A converter
-
- Setup via dip switches
 - For ATEX (Ex) / IECEx when supplied by power supply type 4051A
 - The power supply 4051A and module type 4X79A must be installed outside the hazardous zone
 - Plug-and-play installation with Eilersen digital load cells
 - Input for zeroing
 - A "Digital Junction Box" that can be mounted near the load cells or in a central panel
 - Application specific software can be made by request

- [4X79A Datasheet](#)
- [4000 Generation ATEX Certificate SEV14 ATEX 0171 \(ENGLISH\) PDF](#)
- [4000 Generation IECEx Certificate SEV 14.0023X \(ENGLISH\) PDF](#)
- [0607mu 4x79-1v3a Analog Output Module Manual UK PDF \(ENGLISH\)](#)
- [0607md 4x79-1v3a Analog Output Module Manual DK PDF \(DANISH\)](#)
- [0607mu 4x79-1v3 Quick Start Guide UK PDF \(ENGLISH\)](#)
- [0607md 4x79-1v3 Quick Start Guide DK PDF \(DANISH\)](#)
- [0607mg 4x79-1v3 Quick Start Guide DE PDF \(GERMAN\)](#)
- [0607mr 4x79-1v3 Quick Start Guide RU PDF \(RUSSIAN\)](#)
- [4x79A Connection Drawings NON-ATEX PDF](#)
- [4x79A Connection Drawings ATEX PDF](#)



Parameter	Unit	Data
Input		Up to 4 digital load cells
Analog output		4-20mA or 0-10Vdc
Digital output		EtherNet
Digital I/O		2 IN / 2 OUT
Non-ATEX: Standard Power Supply	Vdc	24Vdc \pm 5%, min. 2A
ATEX: Safe Power Supply	Vdc	ATEX certified Power Supply type 4051A
Operating temperature range	$^{\circ}$ C	5 to 50
Weight	kg	0.7
Housing		Anodized Aluminium
Mounting		Mounting base or DIN rail

Link til PDF fi

- Prepared for panel mounting on DIN rail
- Mounted in stainless steel housing
- Customized application software